

TWIN TANK FLUIDISED BEDS

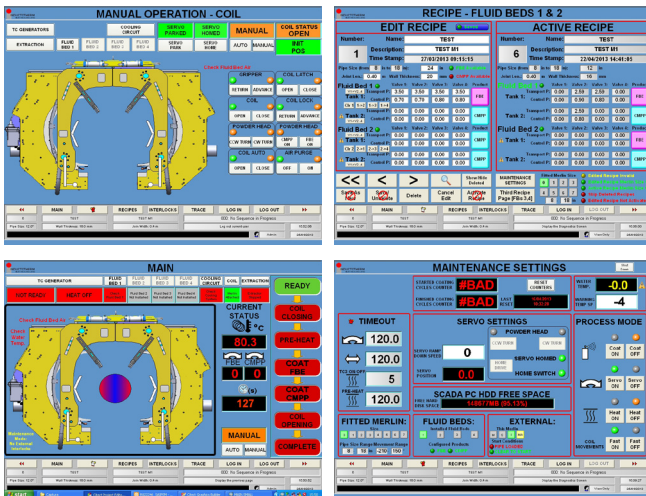
Accurate control of FBE & Co-Polymer Coating



Twin tank fluidised bed comprising tanks, powder pumps and pneumatics – to provide fbe powder and co-polymer to the coating heads of the Merlin Heat & Coat unit.

Electrical activation of the appropriate pumps is pre-programmed through the plc. The individual parts are mounted on a common base on wheels – complete with instrument array.

The PLC system is housed in a rugged control box, it is the heart of the Heating & Coating process, where all data is input and stored in order to facilitate fast and simple set up of heat & coat runs.



For further information on Radyne Offshore Systems please contact Inductotherm Heating & Welding Ltd on:

+44 (0) 1256 335533

info@inductothermhw.co.uk

www.inductothermhw.com



Leading Manufacturers of Melting, Thermal Processing and Production Systems for the Metals and Materials Industry Worldwide.